

Quanta Storage Inc. (TW 6188)

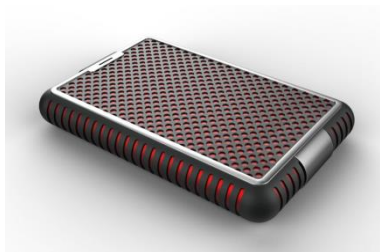
2026.04.30

About QSI

- Since :1999
- Capital : NT\$ 2.78 billion
- Revenue
 - 2024 : NT\$ 8.14 billion
 - 2025 : NT\$ 9.59 billion
 - 2026/Q1 : NT\$ 2.17 billion
- Worldwide employees : 2,000+

About QSI

- HDD
- SSD
- Docking
- TM Robot
- Others



Income statements (YoY)

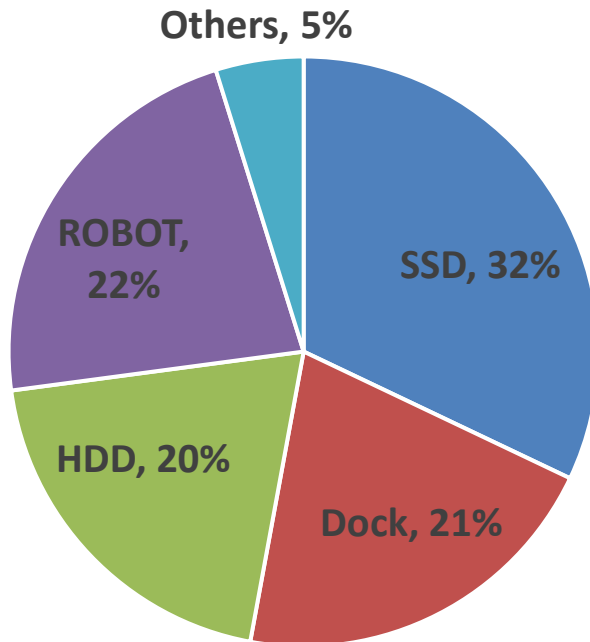
M NTD (Except Earnings Per Share)

	2025/Q1	2026/Q1	Diff	
			Amount	%
Operating Revenues	2,441	2,171	(270)	(11%)
Operating Costs	1,731	1,638	(93)	(5%)
Gross Profit from operations	710	533	(177)	(25%)
%	29%	25%		
Operating expenses	407	423	16	4%
Net operating income	303	110	(193)	(64%)
%	13%	5%		
Non-operating income and expenses	61	82	21	34%
Profit before income tax	364	192	(172)	(47%)
%	15%	9%		
Profit after income tax	283	149	(134)	(47%)
%	12%	7%		
<i>Profit attributable to Owners of parent</i>	268	126	(142)	(53%)
%	11%	6%		
<i>Earnings per share</i>	0.96	0.45	(0.51)	(53%)

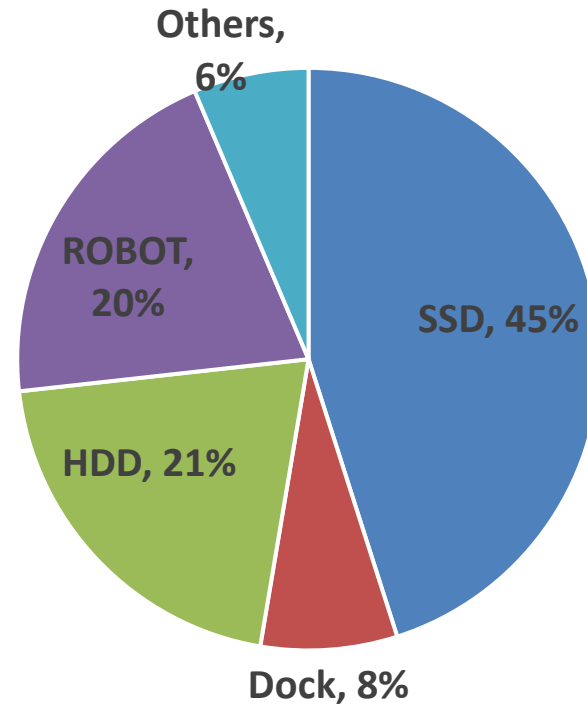
Income statements (QoQ)

	<i>M NTD (Except Earnings Per Share)</i>				
	<i>2025/Q1</i>	<i>2025/Q2</i>	<i>2025/Q3</i>	<i>2025/Q4</i>	<i>2026/Q1</i>
Operating Revenues	2,441	2,238	2,280	2,633	2,171
Operating Costs	1,731	1,557	1,624	1,925	1,638
Gross Profit from operations	710	681	656	707	533
%	29%	30%	29%	27%	25%
Operating expenses	407	396	436	451	423
Net operating income	303	285	220	256	110
%	13%	13%	10%	10%	5%
Non-operating income and expenses	61	4	134	97	82
Profit before income tax	364	289	354	353	192
%	15%	13%	16%	13%	9%
Profit after income tax	283	225	276	251	149
%	12%	10%	12%	10%	7%
<i>Profit attributable to Owners of parent</i>	268	230	272	234	126
%	11%	10%	12%	12%	6%
<i>Earnings per share</i>	0.96	0.83	0.98	0.84	0.45

2026/Q1



2025/Q1



Consolidated Balance Sheets

MNTD

	2026/3/31	2025/12/31	2025/3/31		2026/3/31	2025/12/31	2025/3/31
Current assets				Current liabilities			
Cash and cash equivalents	3,990	1,870	1,211	Short-term borrowing & current fin. Liab.	1,002	50	0
Current financial assets	4,026	7,287	5,094	Accounts payable	1,954	2,217	1,996
Notes & accounts receivable	2,148	2,721	2,482	Other payables	1,404	1,101	1,560
Other receivable	174	97	100	Other current liabilities	1,456	1,413	1,364
Inventories	1,103	1,081	932	Total current liabilities	5,816	4,782	4,920
Other current assets	232	159	116	Non-current liabilities	391	296	291
Total current assets	11,673	13,214	9,935	Total liabilities	6,207	5,078	5,211
Non-current assets				Equity			
Investments	5,336	3,134	1,670	Ordinary share	2,784	2,784	2,784
Non-current financial assets	57	49	22	Capital surplus	5,163	5,174	1,900
Property, plant and equipment	3,486	3,343	2,899	Retained earnings	4,260	4,608	4,288
Deferred tax assets	225	224	236	Other equity	303	172	361
Other non-current assets	246	141	201	Non-controlling interests	2,306	2,290	419
Total Non-current assets	9,350	6,891	5,028	Total equity	14,816	15,027	9,752
Total assets	21,023	20,105	14,963	Total liabilities and equity	21,023	20,105	14,963

Safe Harbor Notice

This presentation contains forward looking statements and is subject to significant risks and uncertainties. Actual results may differ materially from those in the forward looking statements.

Q & A