

Quanta Storage Inc. (TW 6188)

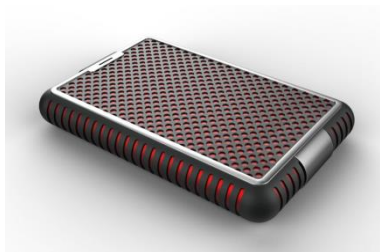
2025.11.28

About QSI

- Since :1999
- Capital : NT\$ 2.78 billion
- Revenue
 - 2023 : NT\$ 10.3 billion
 - 2024 : NT\$ 8.14 billion
 - 2025/Q1-Q3 : NT\$ 6.96 billion
- Worldwide employees : 1,900+

About QSI

- HDD
- SSD
- Docking
- TM Robot
- Others



Income statements (YoY)

M NTD (Except Earnings Per Share)

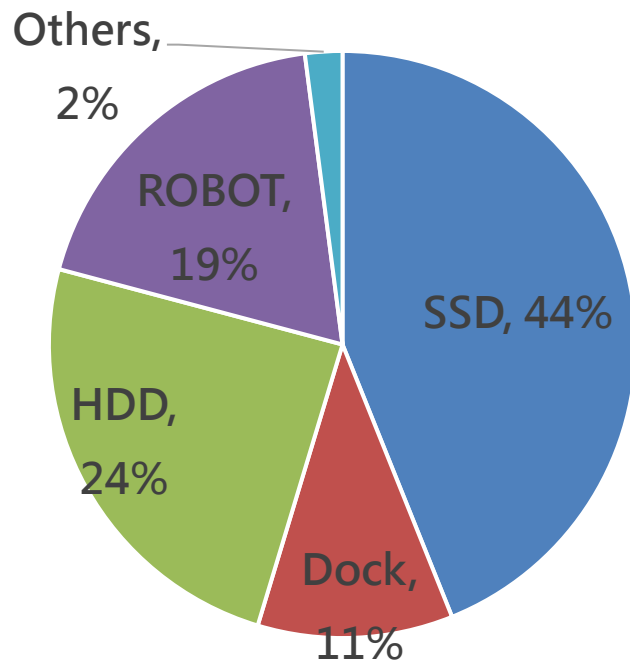
	2024/Q1-Q3	2025/Q1-Q3	Diff	
			Amount	%
Operating Revenues	5,765	6,960	1,195	21%
Operating Costs	4,204	4,913	709	17%
Gross Profit from operations	1,561	2,047	486	31%
%	27%	29%		
Operating expenses	1,185	1,238	53	4%
Net operating income	376	809	433	115%
%	8%	13%		
Non-operating income and expenses	229	198	(31)	(14%)
Profit before income tax	605	1,007	402	66%
%	10%	14%		
Profit after income tax	464	783	319	69%
%	8%	12%		
<i>Profit attributable to Owners of parent</i>	454	770	316	70%
%	8%	11%		
<i>Earnings per share</i>	1.63	2.77	1.14	70%

Income statements (QoQ)

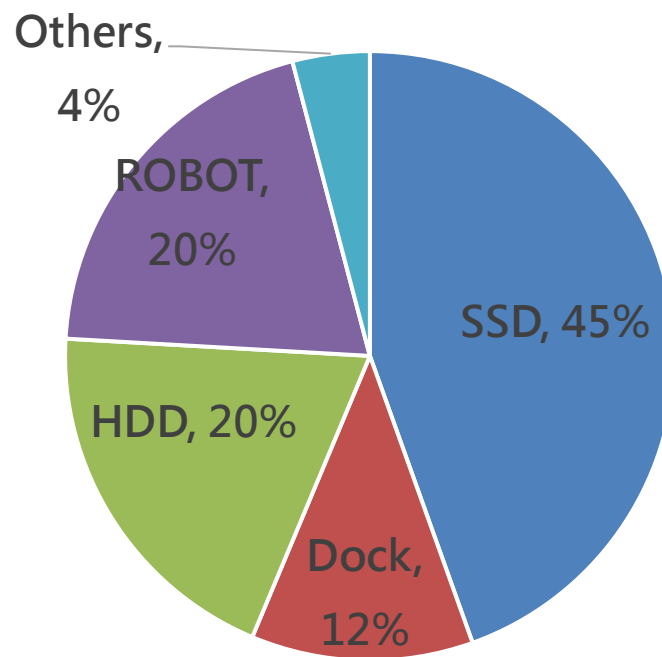
M NTD (Except Earnings Per Share)

	2024/Q3	2024/Q4	2025/Q1	2025/Q2	2025/Q3
Operating Revenues	1,696	2,374	2,441	2,238	2,280
Operating Costs	1,212	1,685	1,731	1,557	1,624
Gross Profit from operations	484	689	710	681	656
%	28%	29%	29%	30%	29%
Operating expenses	393	440	407	396	436
Net operating income	91	247	303	285	220
%	5%	10%	13%	13%	10%
Non-operating income and expenses	43	(2)	61	4	134
Profit before income tax	134	246	364	289	354
%	8%	10%	15%	13%	16%
Profit after income tax	104	204	283	225	276
%	6%	9%	12%	10%	12%
<i>Profit attributable to Owners of parent</i>	102	196	268	230	272
%	6%	8%	11%	10%	12%
<i>Earnings per share</i>	0.37	0.7	0.96	0.83	0.98

2024/Q1-Q3



2025/Q1-Q3



Consolidated Balance Sheets

	2025/9/30	2024/12/31	2024/9/30		2025/9/30	2024/12/31	2024/9/30
Current assets				Current liabilities			
Cash and cash equivalents	2,149	1,433	1,600	Short-term borrowing & current fin. Liab.	961	0	0
Current financial assets	8,724	4,830	4,437	Accounts payable	1,882	1,871	1,571
Notes & accounts receivable	2,290	2,353	1,868	Other payables	978	1,124	926
Other receivable	232	99	109	Other current liabilities	1,362	1,343	1,181
Inventories	1,034	925	874	Total current liabilities	5,183	4,338	3,678
Other current assets	158	107	124	Non-current liabilities	257	302	327
Total current assets	14,587	9,747	9,012	Total liabilities	5,440	4,640	4,005
Investments	1,953	1,665	1,569	Equity			
Non-current financial assets	42	21	25	Ordinary share	2,784	2,784	2,784
Property, plant and equipment	2,994	2,712	2,504	Capital surplus	5,174	1,900	1,900
Deferred tax assets	232	235	257	Retained earnings	4,374	4,578	4,370
Other non-current assets	156	199	233	Other equity	20	275	149
				Non-controlling interests	2,172	402	392
				Total equity	14,524	9,939	9,595
Total assets	19,964	14,579	13,600	Total liabilities and equity	19,964	14,579	13,600

Safe Harbor Notice

This presentation contains forward looking statements and is subject to significant risks and uncertainties. Actual results may differ materially from those in the forward looking statements.

Q & A