

Quanta Storage Inc. (TW 6188)

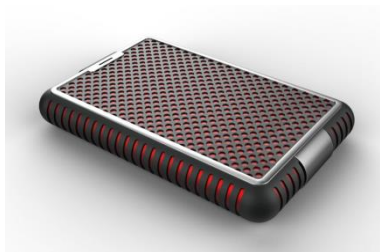
2025.08.14

About QSI

- Since :1999
- Capital : NT\$ 2.78 billion
- Revenue
 - 2023 : NT\$ 10.3 billion
 - 2024 : NT\$ 8.14 billion
 - 2025/H1 : NT\$ 4.68 billion
- Worldwide employees : 1,900+

About QSI

- HDD
- SSD
- Docking
- TM Robot
- Others



Income statements (YoY)

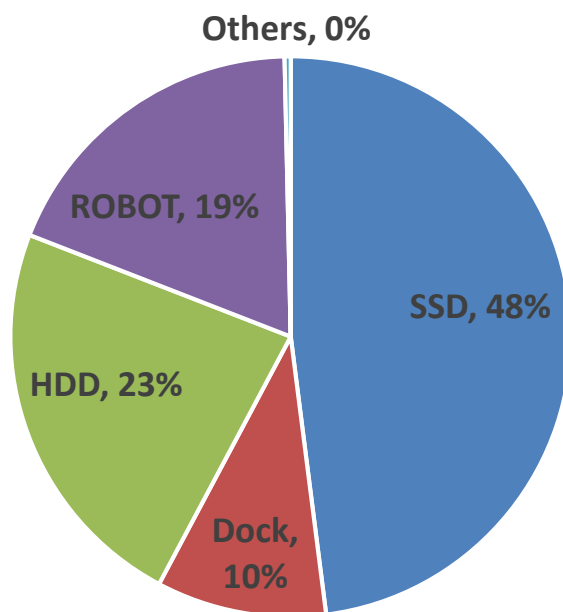
M NTD (Except Earnings Per Share)

	2024/H1	2025/H1	Diff	
			Amount	%
Operating Revenues	4,070	4,680	610	15%
Operating Costs	2,993	3,289	296	10%
Gross Profit from operations	1,077	1,391	314	29%
%	26%	29%		
Operating expenses	792	803	11	1%
Net operating income	285	588	303	106%
%	8%	13%		
Non-operating income and expenses	185	64	(121)	(65%)
Profit before income tax	470	652	182	39%
%	12%	14%		
Profit after income tax	361	507	146	40%
%	10%	10%		
<i>Profit attributable to Owners of parent</i>	352	498	146	41%
%	9%	11%		
<i>Earnings per share</i>	1.26	1.79	0.53	42%

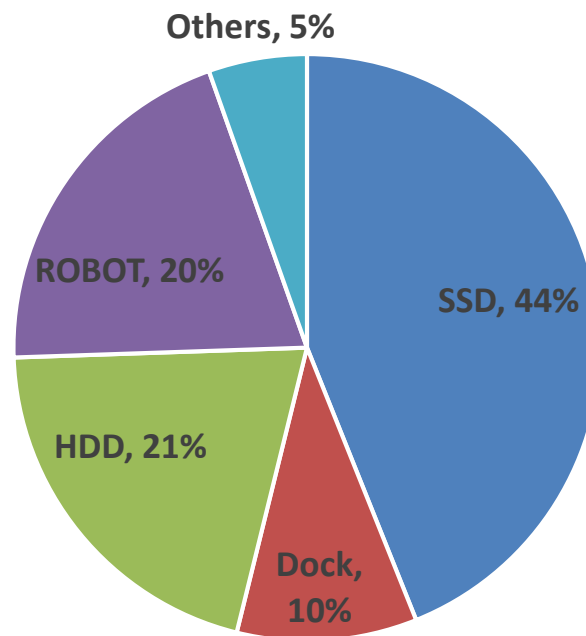
Income statements (QoQ)

	<i>M NTD (Except Earnings Per Share)</i>				
	<i>2024/Q2</i>	<i>2024/Q3</i>	<i>2024/Q4</i>	<i>2025/Q1</i>	<i>2025/Q2</i>
Operating Revenues	1,876	1,696	2,374	2,441	2,238
Operating Costs	1,364	1,212	1,685	1,731	1,557
Gross Profit from operations	512	484	689	710	681
%	27%	28%	29%	29%	30%
Operating expenses	405	393	440	407	396
Net operating income	108	91	247	303	285
%	6%	5%	10%	13%	13%
Non-operating income and expenses	75	43	(2)	61	4
Profit before income tax	182	134	246	364	289
%	10%	8%	10%	15%	13%
Profit after income tax	143	104	204	283	225
%	8%	6%	9%	12%	10%
<i>Profit attributable to Owners of parent</i>	135	102	196	268	230
%	8%	6%	8%	11%	10%
<i>Earnings per share</i>	0.49	0.37	0.70	0.96	0.83

2024/H1



2025/H1



Consolidated Balance Sheets

MNTD

	2025/6/30	2024/12/31	2024/6/30		2025/6/30	2024/12/31	2024/6/30
Current assets				Current liabilities			
Cash and cash equivalents	4,476	1,433	1,275	Short-term borrowing & current fin. Liab.	578	0	0
Current financial assets	1,968	4,830	4,838	Accounts payable	1,779	1,871	1,614
Notes & accounts receivable	2,045	2,353	2,258	Other payables	960	1,124	926
Other receivable	74	99	123	Other current liabilities	1,363	1,343	1,236
Inventories	945	925	667	Total current liabilities	4,680	4,338	3,776
Other current assets	139	107	140	Non-current liabilities	269	302	260
Total current assets	9,647	9,747	9,301	Total liabilities	4,949	4,640	4,036
Investments	1,673	1,665	1,198	Equity			
Non-current financial assets	33	21	25	Ordinary share	2,784	2,784	2,784
Property, plant and equipment	2,703	2,712	2,438	Capital surplus	1,900	1,900	1,749
Deferred tax assets	230	235	258	Retained earnings	4,519	4,578	4,267
Other non-current assets	165	199	151	Other equity	(112)	275	176
				Non-controlling interests	411	402	359
				Total equity	9,502	9,939	9,335
Total assets	14,451	14,579	13,371	Total liabilities and equity	14,451	14,579	13,371

Safe Harbor Notice

This presentation contains forward looking statements and is subject to significant risks and uncertainties. Actual results may differ materially from those in the forward looking statements.

Q & A